

# KANBAN MATURITY MODEL



TWO DAY COURSE

## Evolve and Manage Your Transformation

You understand how the Kanban Method works for systems and you understand how to improve them using evolutionary change. The next step on your journey is to understand the multitude of options available to you through the Kanban Maturity Model.

The Model, based on 10 years of experience, helps you to frame your change using an evolutionary change model canvas. This reflects not only the potential pathways to evolving towards desired outcomes, but also how to do it with respect to culture and a necessary need to experiment along the way.



### Is the Kanban Maturity Model the Right Course for Me?

If you are involved in a change in your organization, whether it's for the entire organization or at the team level, then you will gain insight through the concepts and techniques learned in this course.

If you are currently working through a transformation and struggling to make progress, this course will help you to design change using an evolutionary and experimental approach.

Yes We

KANBAN

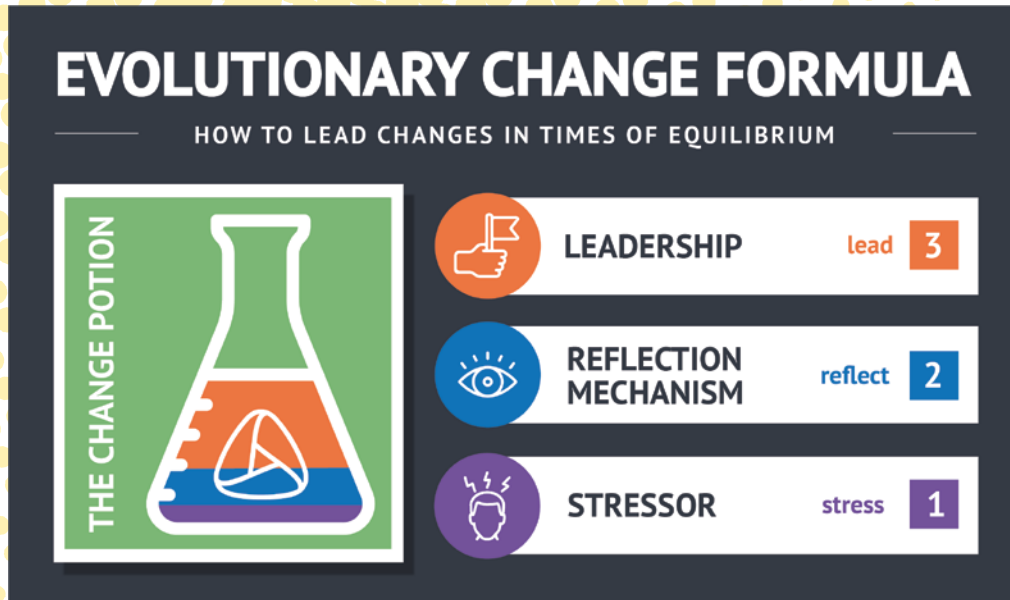


Kanban University

# MANAGE AND SCALE

USING EVOLUTIONARY CHANGE

## Design for Evolutionary Change

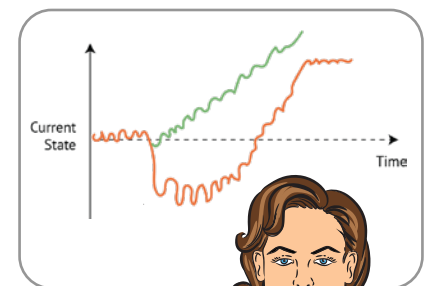


All participants will receive a certificate of completion for the Kanban Maturity Model course.

Students who complete both this course and the Kanban Coaching course, and are Kanban Management Professionals (KMP), are eligible to take the Kanban Coaching Professional (KCP) Credential exam.

### What You Will Leave With

- Understand the two most common forms of failure when attempting change.
- Learn about the Kanban Maturity Model and how to use it in your work when designing and managing evolutionary change at the team and organizational levels.
- Understand how to gauge your organizations current level of maturity before you start evolving it.
- Be able to define organizational maturity in terms of behavioral patterns, depth of Kanban practices, and business outcomes.
- Identify potential resistance before it occurs and how to leverage influencers in your organization to help with adopting new changes.
- Learn how to utilize a Kanban system for managing your changes using an experimental approach.



# KANBAN COACHING



TWO DAY COURSE

## Learn How to Coach for Organizational Change Using the Kanban Method's Evolutionary Change Approach

You learned what the Kanban Maturity Model is and how to build an Evolutionary Change Canvas. Your next step to becoming a coach is to learn how to utilize advanced concepts of change management and sociological concepts to address the underlying resistance common in many organizational cultures.

Learn how to refine and iterate your Evolutionary Change Canvas to include aspects of your organizational culture including resistance by individuals and groups. Understand and practice how to overcome change plateaus while avoiding the all-too-common aspects of overreaching when considering organizational change. Practice the six escalating steps to increase the motivation for change.



## Is Kanban Coaching the Right Course for Me?

If you have not yet completed Kanban System Design (KSD), Kanban Systems Improvement (KSI), and Kanban Maturity Model (KMM) training, we strongly recommend you take these courses before taking Kanban Coaching. Some people assume this is a single course without any prior knowledge required. This course assumes you have already completed an initial Evolutionary Change Canvas that was built during your Kanban Maturity Model course.

If you have taken the KMM and want to know how to assess and plan for the impacts of your evolutionary change as you help your organization to mature, Kanban Coaching is the right course for you.

Yes We

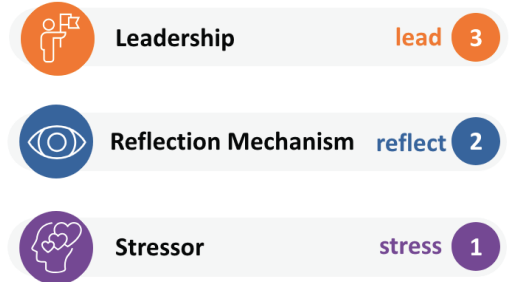
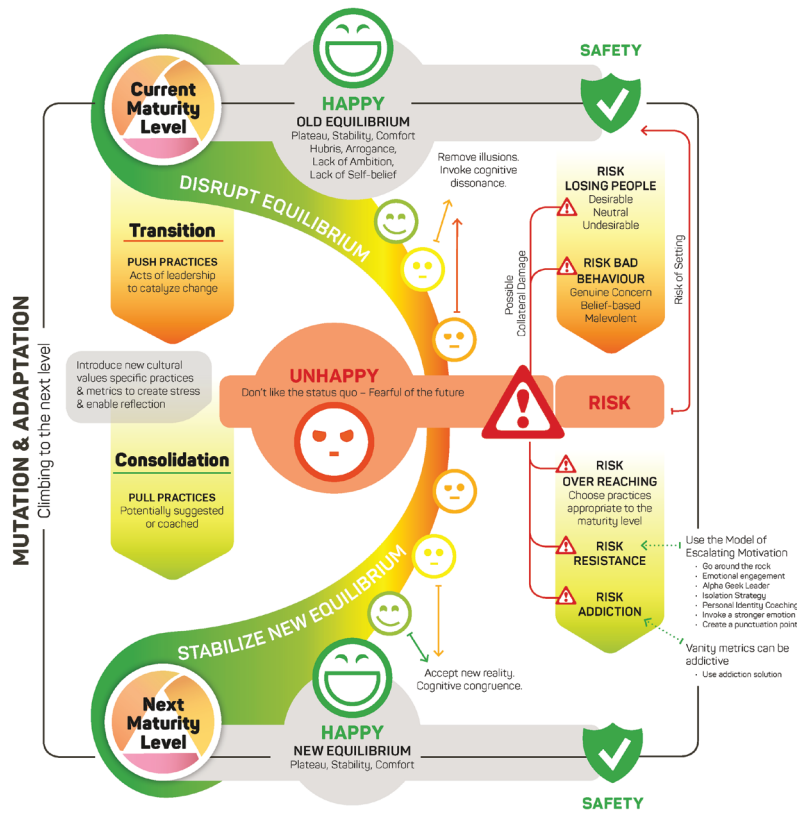
K  
A  
N  
B  
A  
N



Kanban  
University

# LEAD AND INFLUENCE

## ORGANIZATIONAL MATURITY USING EVOLUTIONARY CHANGE



All participants will receive a certificate of completion for the Kanban Coaching course.

Students completing the coursework requirement of the Kanban Coaching Professional (KCP) credential (KSD, KSI, KMM, and KC courses) are eligible to take the KCP Exam to attain their KCP Credential.

The Evolutionary Change Model is intended to map to any level of the KMM from ML1 to ML5 and illustrates how to use the specific practices in the KMM to manage evolutionary, incremental change.

### What You Will Leave With

- A refined Evolutionary Change Canvas or set of canvases that support your ongoing evolutionary change work within your organization.
- The ability to identify and prepare evolutionary change experiments to address the sociological factors that will likely affect your organization's maturity over time.
- How to reflect both normative and structural change in your organization.
- The ability to identify the right leverage points to maximize the chance of successful evolutionary change.
- The skills to approach leaders with relevant and pragmatic guidance.



The KCP is an internationally recognized, advanced-level credential. Kanban Coaching Professionals are proven to hold a specific set of effective coaching tools to lead and evolve organizations to higher levels of maturity.